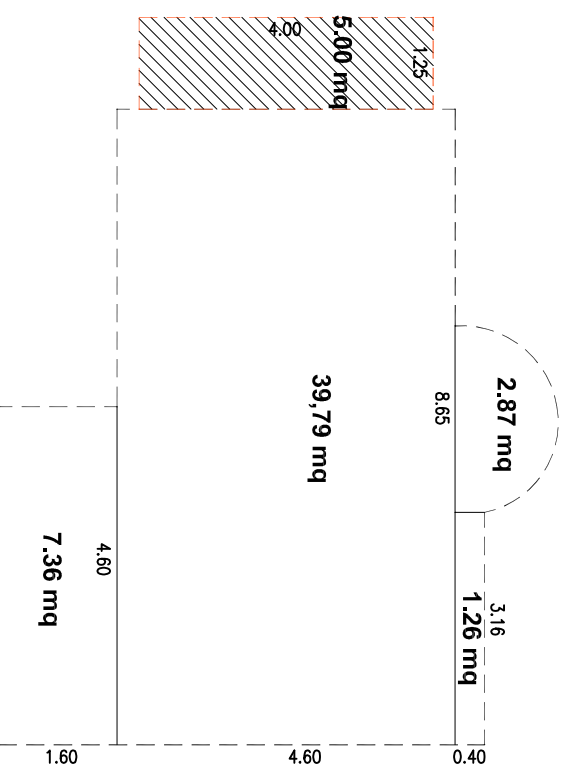
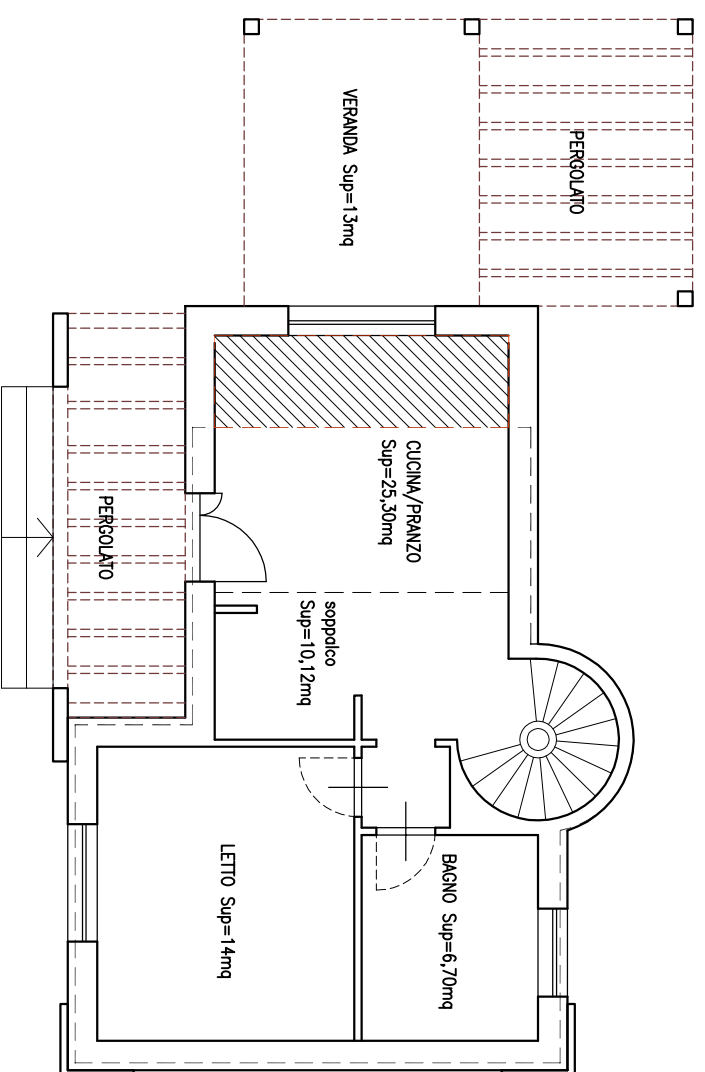


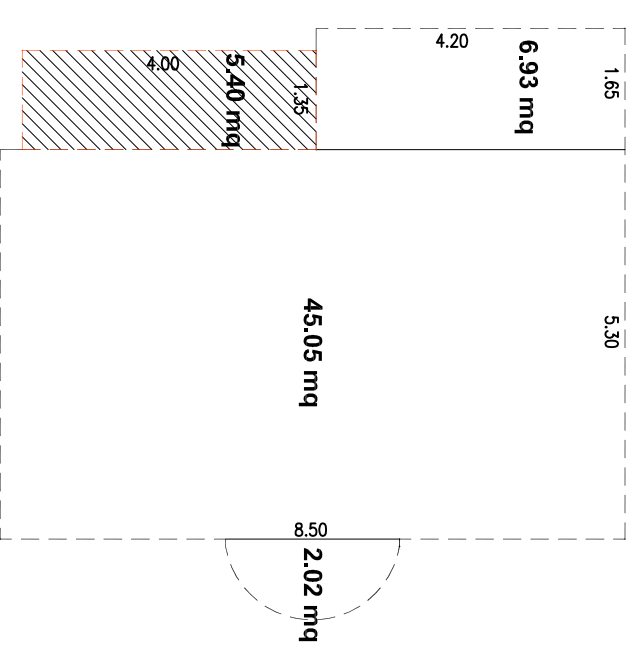
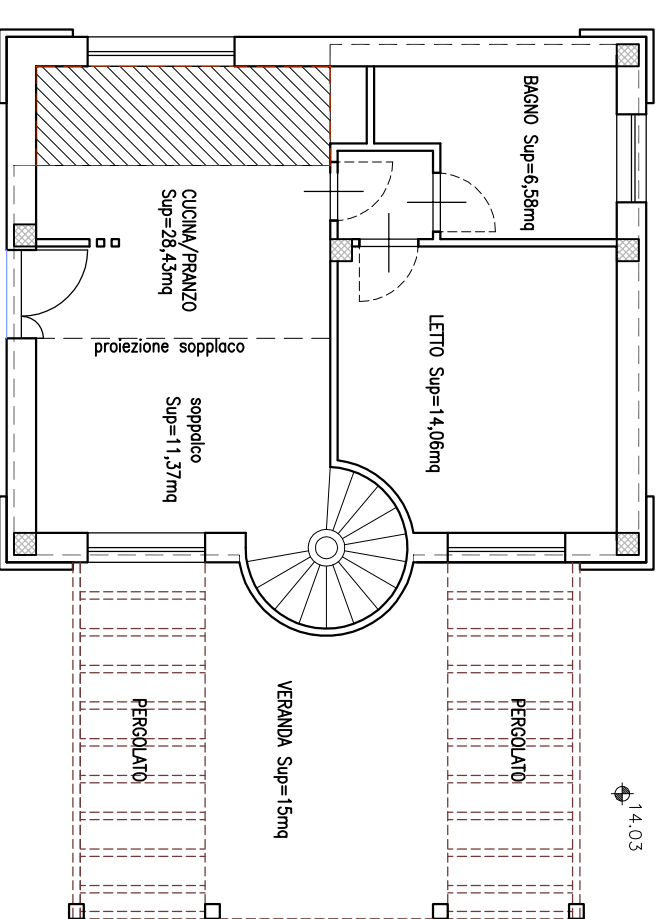
# DIMOSTRAZIONE DELLA SUI

LOTTO n. 1



Sul = 1,26 + 2,87 + 39,79 + 7,36 = 51,28 mq  
Sul (bonus del 10%) = 5,00 mq  
Sul tot. (per lotto 1) = 56,28 mq  
Superficie della tettoia = 13,00mq < 40%Sul = 22,50 mq

LOTTO n. 2 - LOTTO n.3



Sul = 6,93 + 45,05 + 2,02 = 54,00 mq  
Sul (bonus del 10%) = 5,40 mq  
Sul tot. (per lotto 2 e 3) = 59,40 mq  
Superficie della tettoia = 15,00mq < 40%Sul = 23,76 mq

**Sul tot.= 56.28 mq (lotto 1) + 59.40 mq (lotto2) + 59.40 mq (lotto 3) = 175.00 mq < 177.00 mq**